

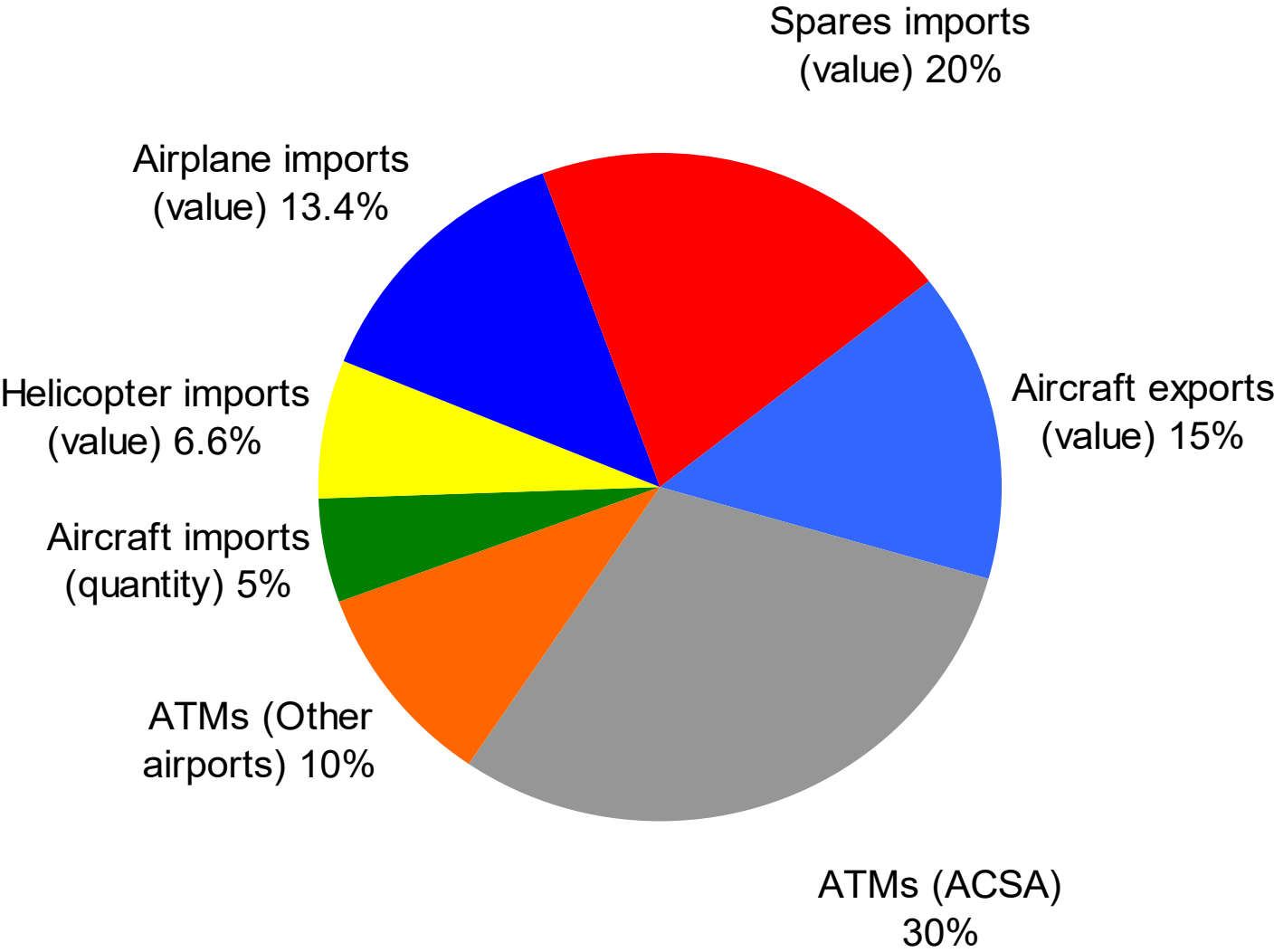


The CAASA
Aviation Activity Index
(CAAI)
3rd quarter 2017

Methodology employed for the design of the Aviation Activity Index (AAI)

- The AAI is based on composite indexation technique, whereby a group of indicators representing different units is forged into a single value
- The different indicators are each assigned a weighting in terms of their perceived contribution to the trend that the index wishes to illustrate, namely the current & historical level of activity in the commercial aviation industry
- Changes over time in the different indicators are measured and then also expressed as changes to the weighted index
- A total of 25 different indicators comprise the AAI, emanating from the following seven groups:
 - (i) Value of imports of helicopters
 - (ii) Value of imports of aeroplanes (of a mass less than 15t)
 - (iii) Physical quantity of imported aircraft
 - (iv) Value of imports of aircraft spares
 - (v) Value of exports of aircraft (of a mass less than 15t)
 - (vi) Air traffic movements at ACSA airports
 - (vii) Air traffic movements at key non-ACSA airports
- Combined in an appropriately weighted index, these indicators provide an objective & balanced measure of economic activity in various spheres of the commercial aviation industry

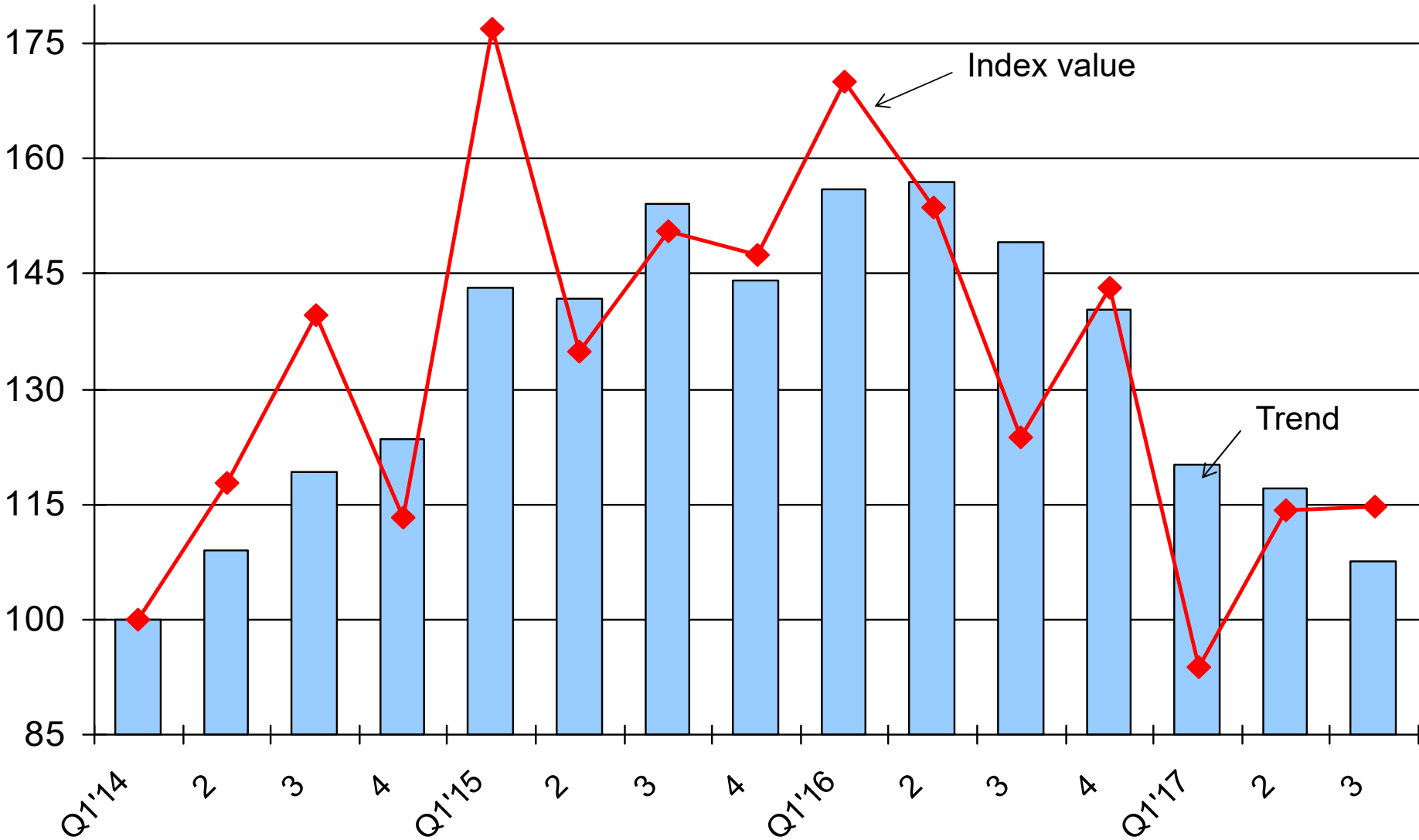
Composition of the groups of indicators included in the CAAI



CAASA Aviation Activity Index (CAAI) for South Africa

(Trend = 3-quarter moving average)

Index; Q1 2014=100



Some trivia questions

1. Which of the following airports had the most ATMs in Q3 2017:

- Port Elizabeth or Durban?
- Rand or Cape Town?
- George or Virginia?
- Grand Central or Durban?

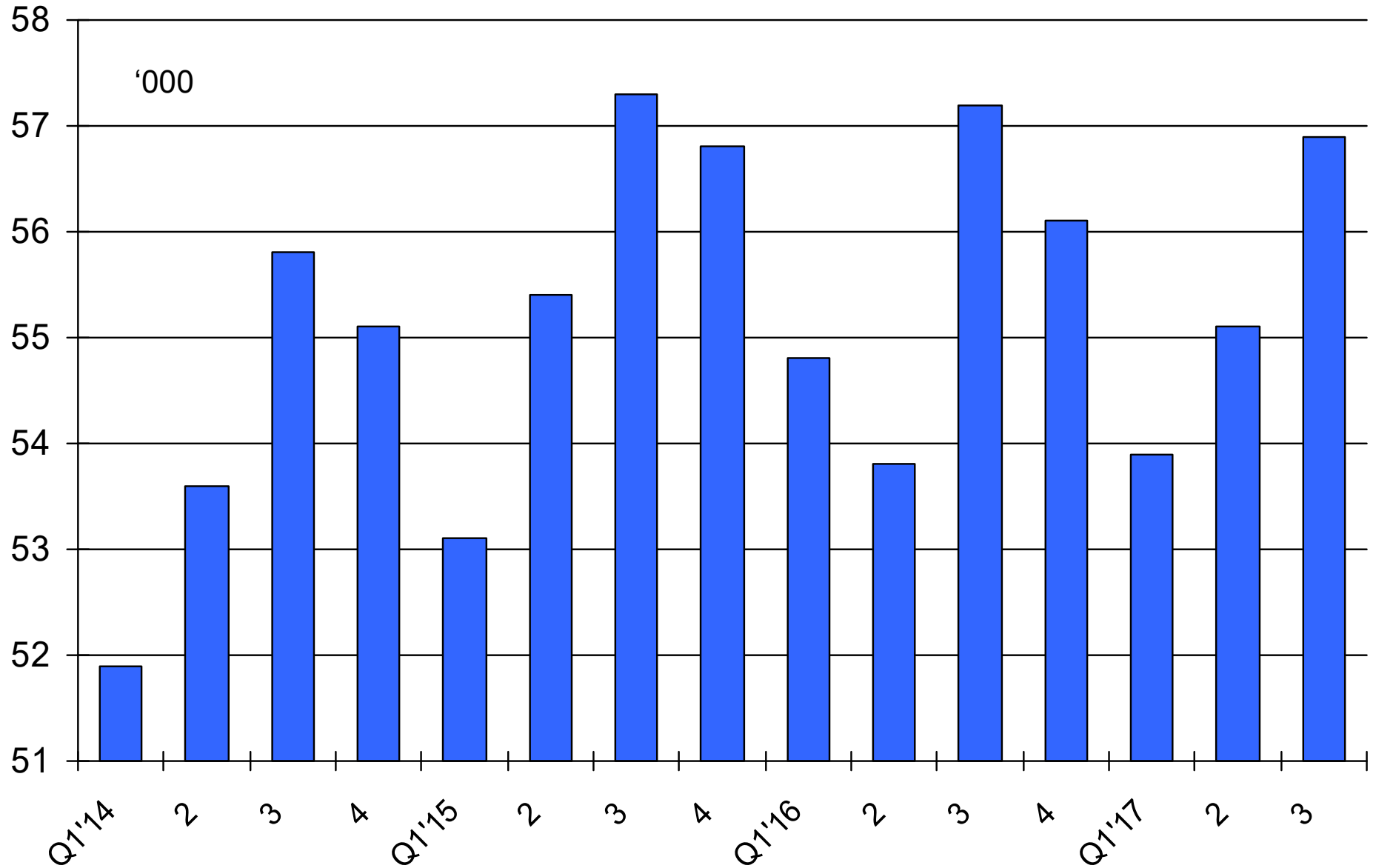
2. Which of the following had the highest import value in Q3 2017:

- Propellers or undercarriages?

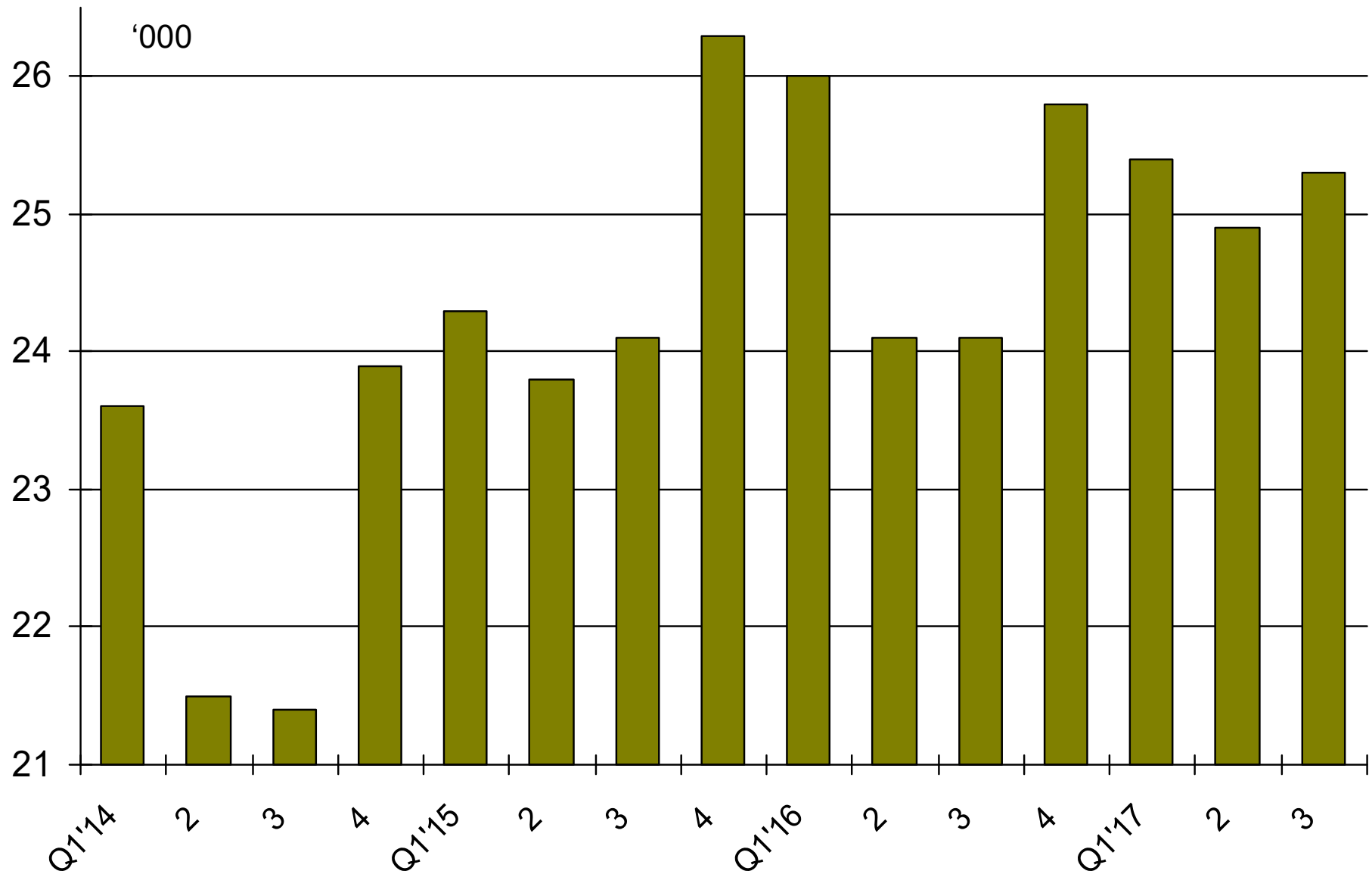
3. Which of the following had the highest import value in Q3 2017:

- Aeroplanes < 15t or aircraft spares?

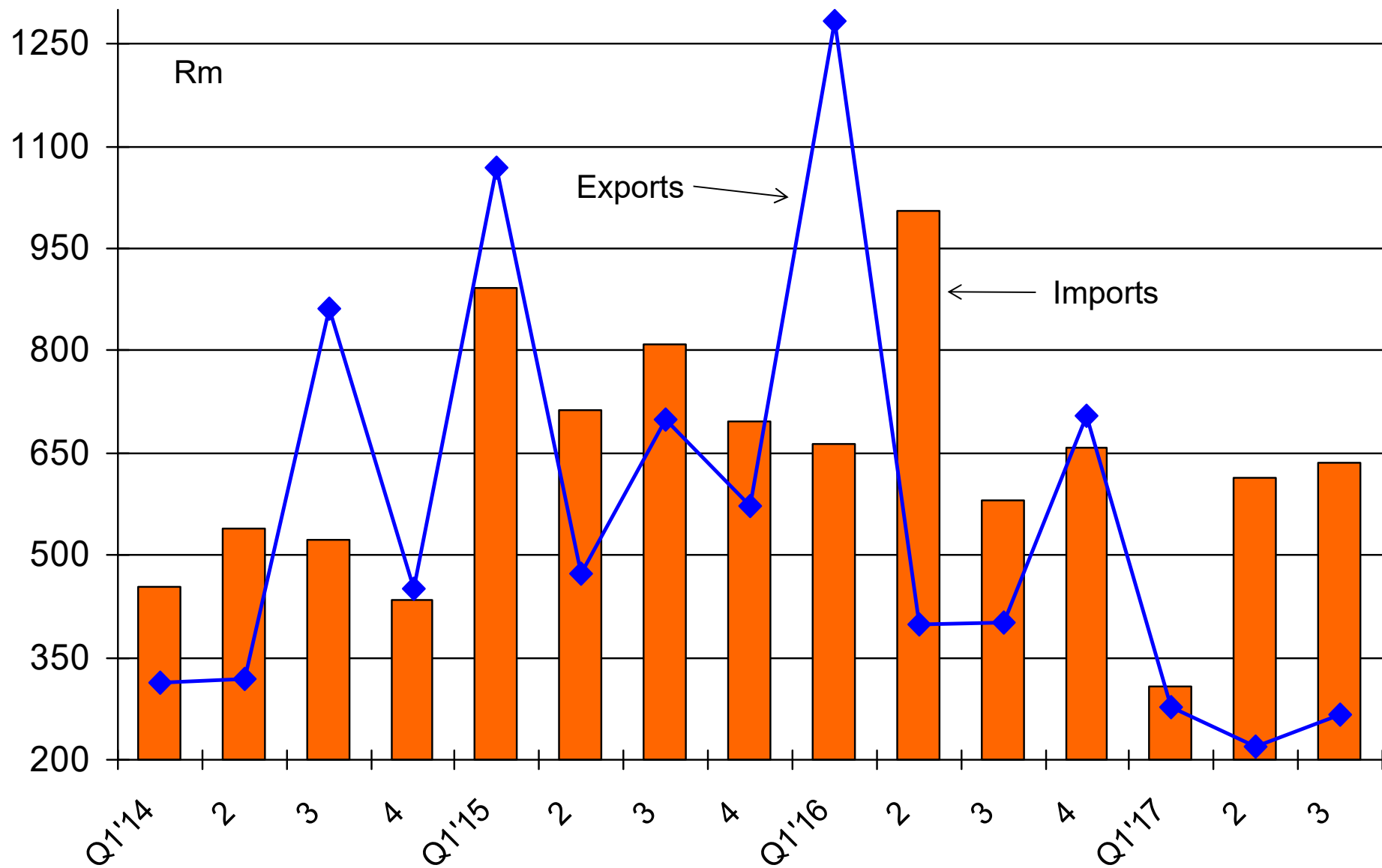
ATMs at OR Tambo airport



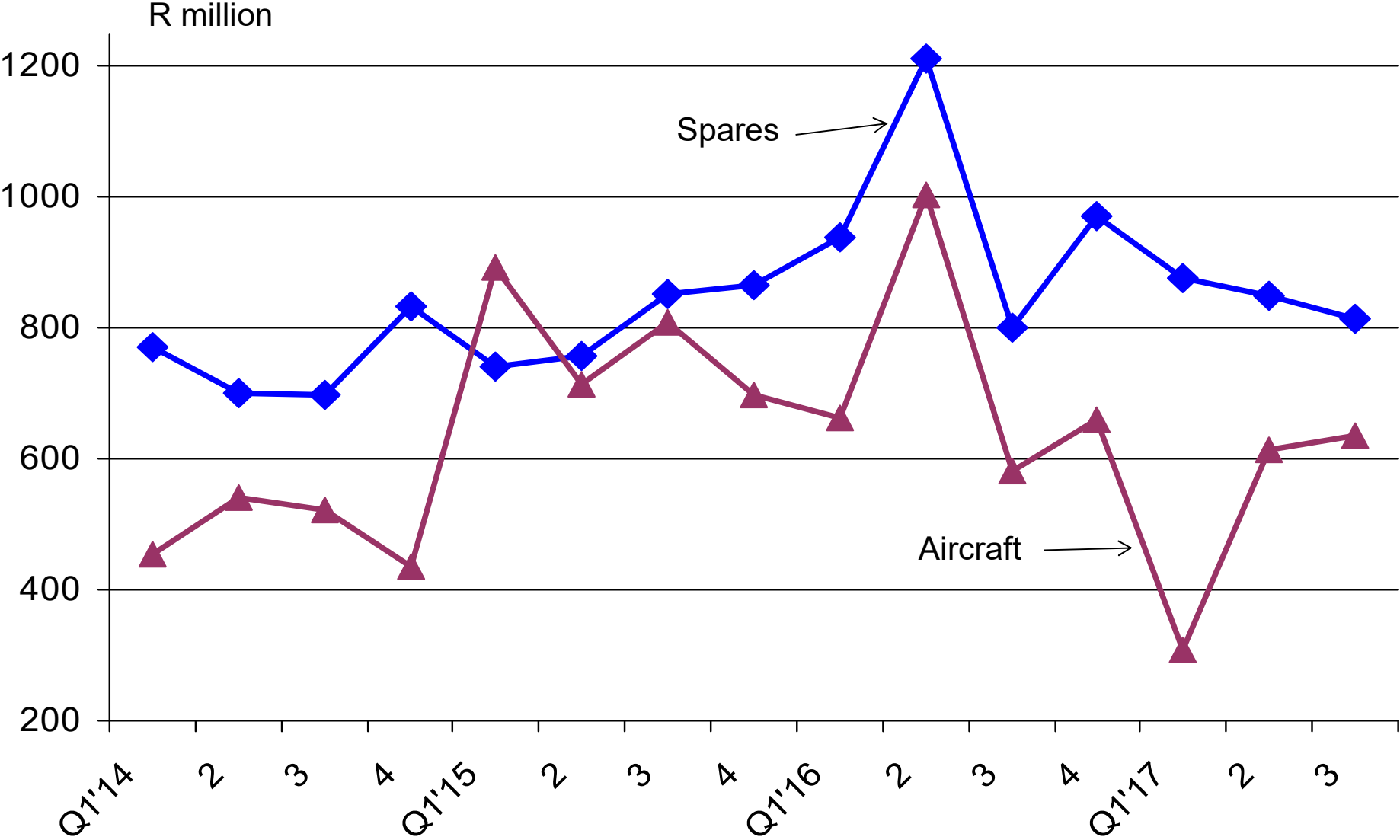
ATMs at Cape Town airport



Import & export value of helicopters and aeroplanes with a mass of less than 15t



Value of imports of aircraft & spares



Worst performers in Q3 2017 (compared to average since 2014)

	%
Exports of aeroplanes 2t-15t	-87
Imports of aeroplanes < 2t	-66.5
ATMs George	-35.8
Imports of helicopters >2t	-21.5
ATMs East London	-12.4
Imports of propellers	-11.1
ATMs PE	-10.2
ATMs Virginia	-5
ATMs Richards Bay	-3.6

Best performers in Q3 2017 (compared to average since 2014)

	%
Exports of helicopters	127.2
Imports helicopters < 2t	66.7
Exports of aeroplanes < 2t	22.6
ATMs PmB	14.3
ATMs Nelspruit	9.9
ATMs Rand	6.7
ATMs Lanseria	6.4
ATMs Durban	5.5
Imports general spares	5.3
ATMs Cape Town	4.2
ATMs Grand Central	4.1
Quantity of airplane imports 2t - 15t	3.7