

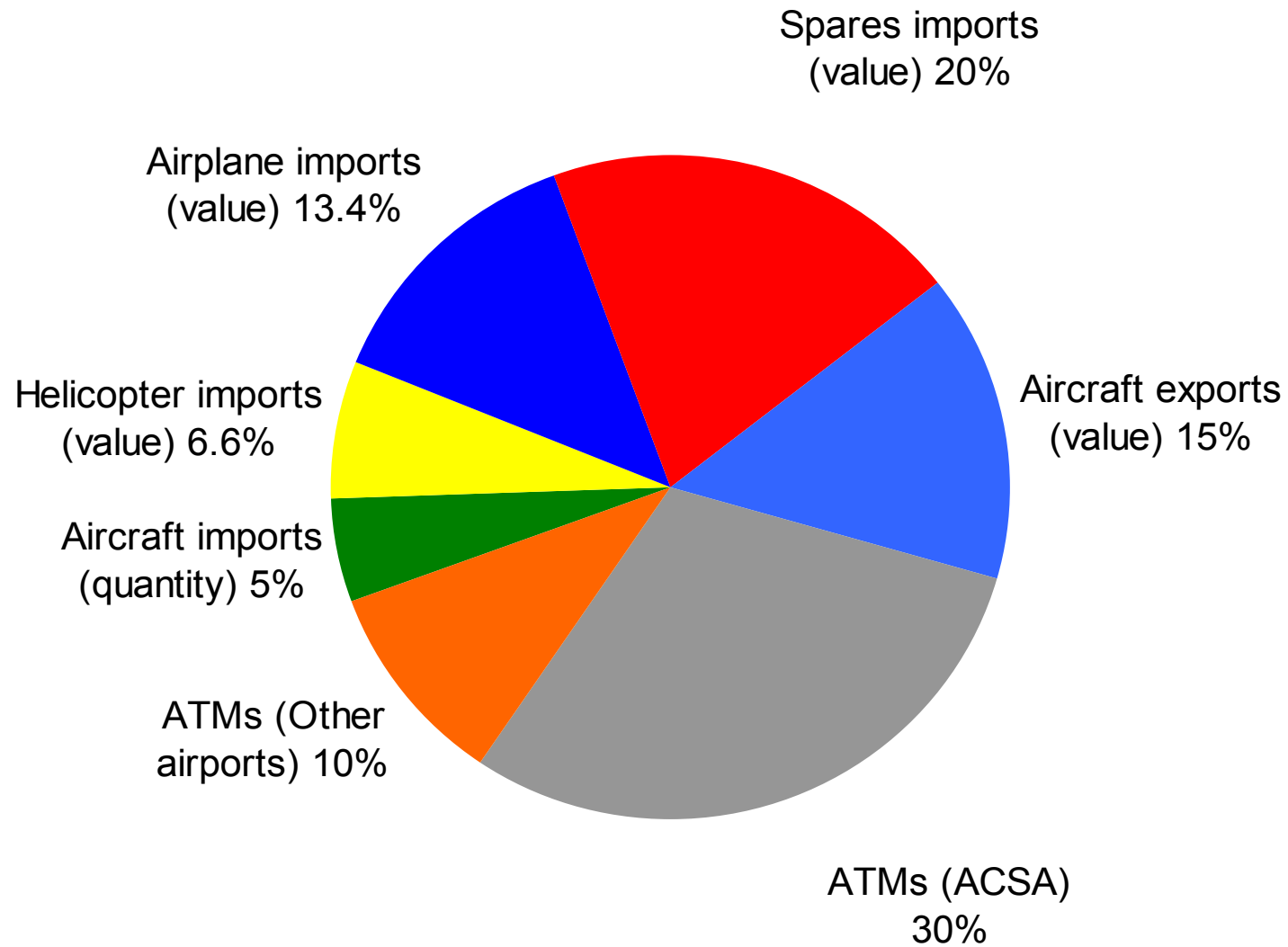


The CAASA
Aviation Activity Index
(CAAI)
4th quarter 2016

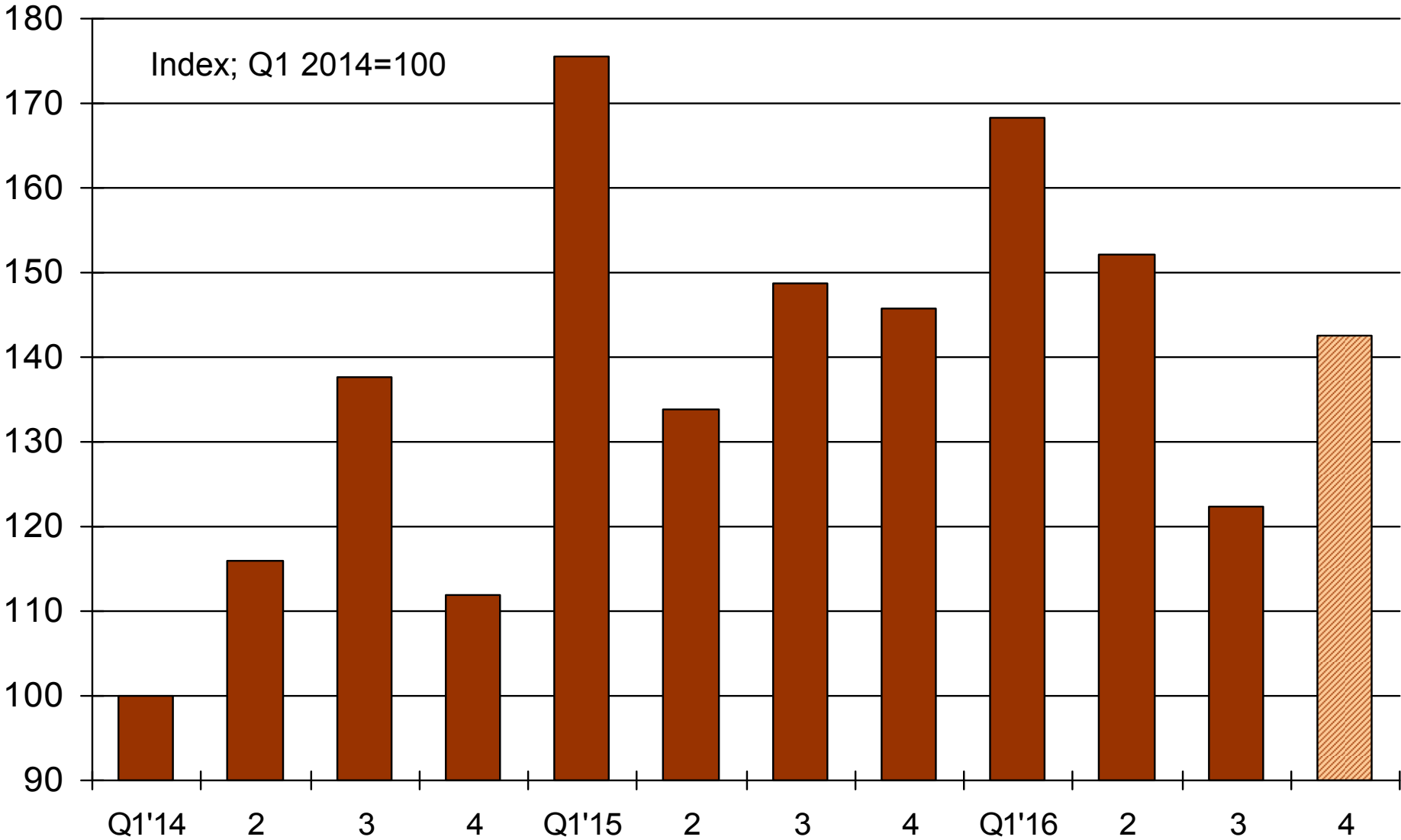
Methodology employed for the design of the Aviation Activity Index (AAI)

- The AAI is based on composite indexation technique, whereby a group of indicators representing different units is forged into a single value
- The different indicators are each assigned a weighting in terms of their perceived contribution to the trend that the index wishes to illustrate, namely the current & historical level of activity in the commercial aviation industry
- Changes over time in the different indicators are measured and then also expressed as changes to the weighted index
- A total of 25 different indicators comprise the AAI, emanating from the following seven groups:
 - (i) Value of imports of helicopters
 - (ii) Value of imports of aeroplanes (of a mass less than 15t)
 - (iii) Physical quantity of imported aircraft
 - (iv) Value of imports of aircraft spares
 - (v) Value of exports of aircraft (of a mass less than 15t)
 - (vi) Air traffic movements at ACSA airports
 - (vii) Air traffic movements at key non-ACSA airports
- Combined in an appropriately weighted index, these indicators provide an objective & balanced measure of economic activity in various spheres of the commercial aviation industry

Composition of the groups of indicators included in the CAAI

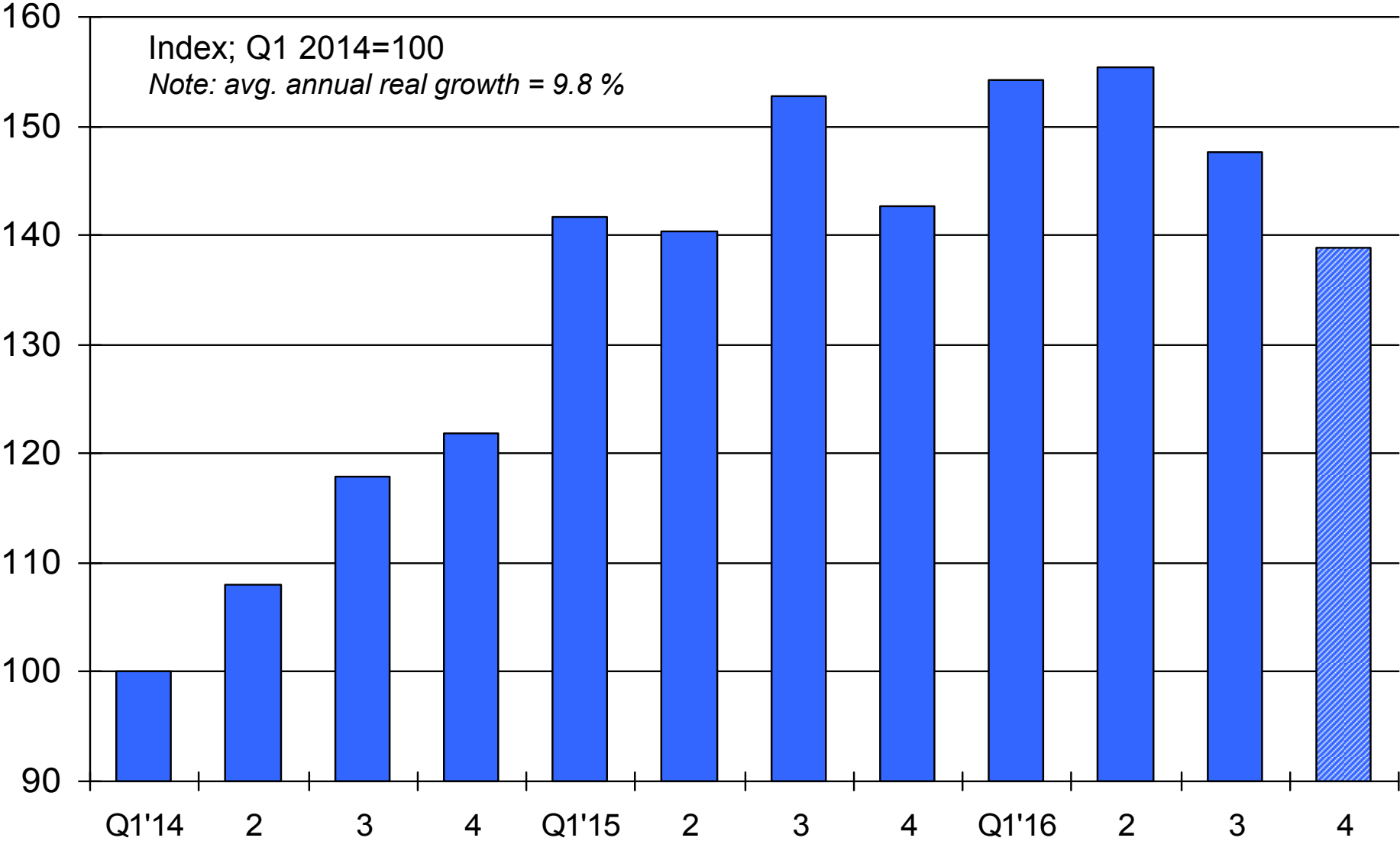


CAASA Aviation Activity Index (CAAI) for South Africa



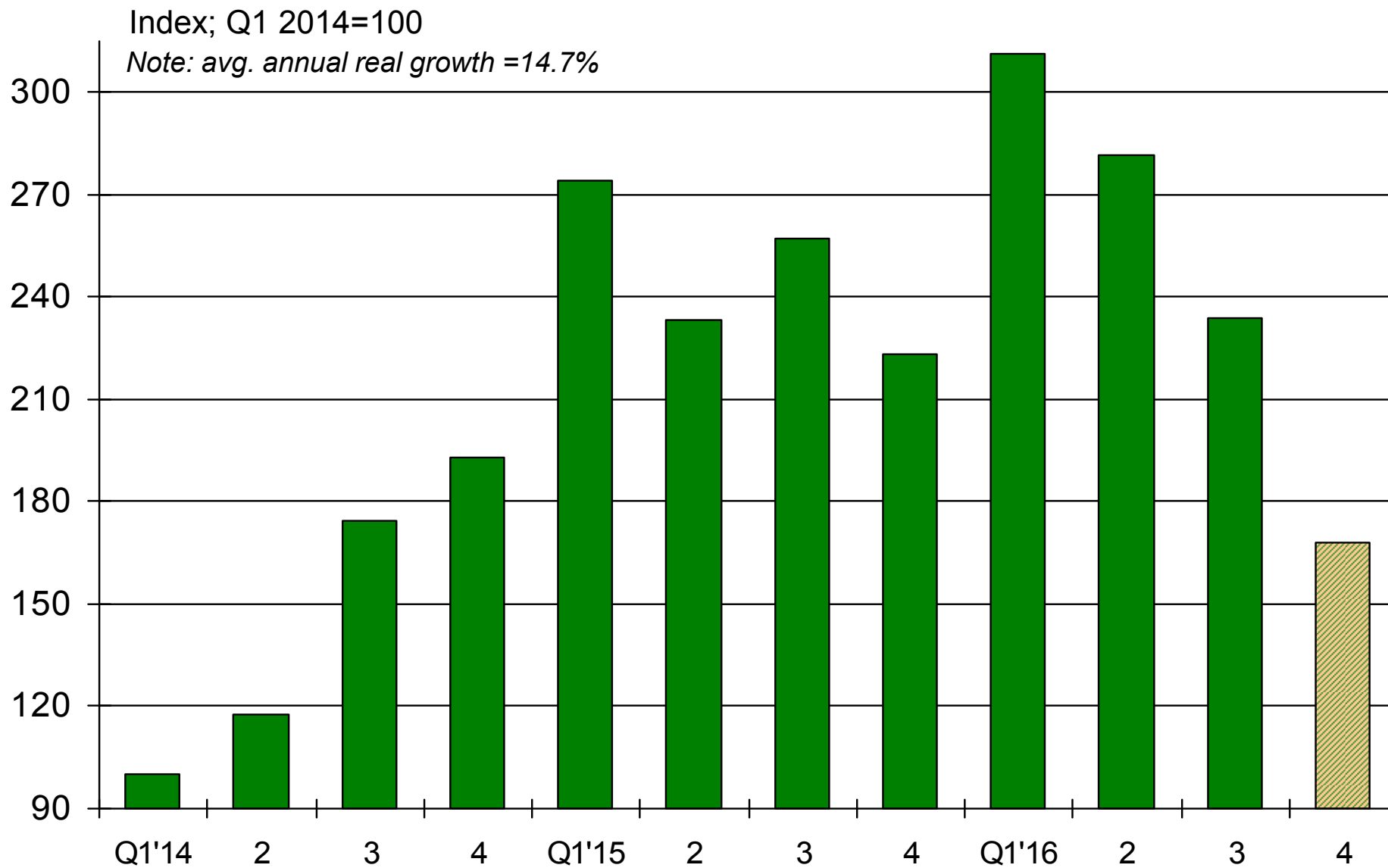
CAASA Aviation Activity Index (CAAI) for South Africa

(3-quarter moving average)



CAAI group index for the value of aircraft exports

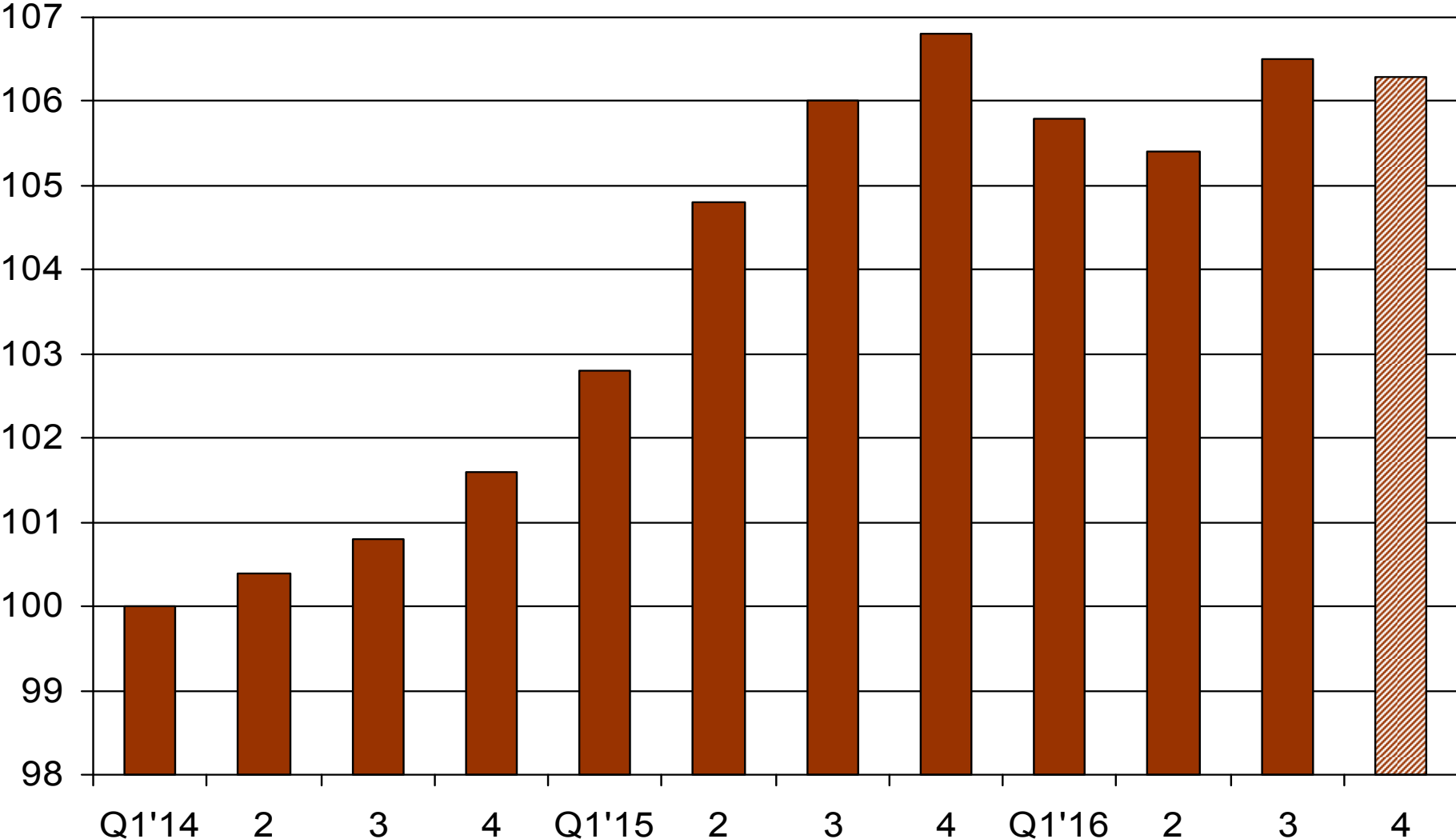
(3-quarter moving average)



CAAI Group index for air traffic movements at major airports

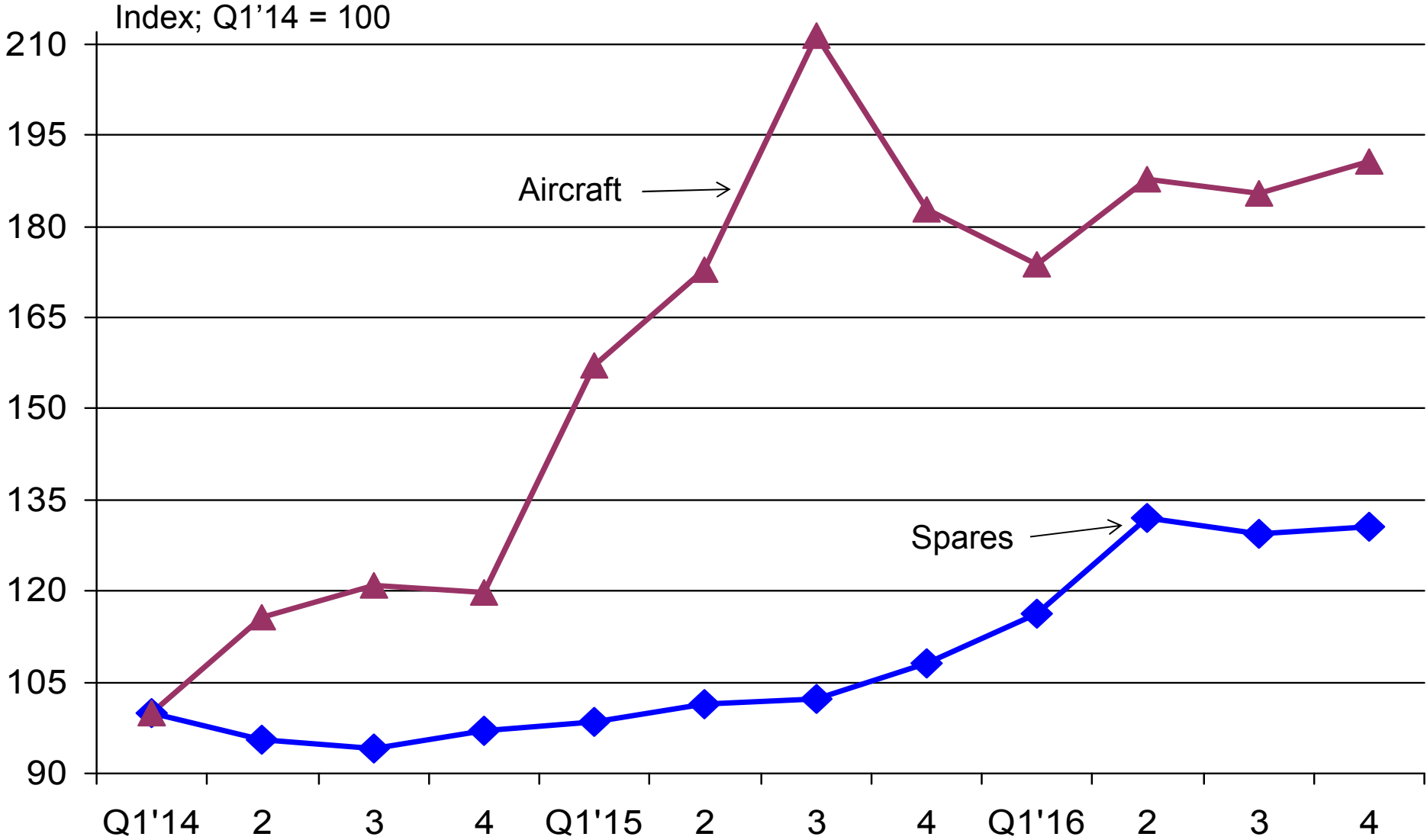
(Source: ACSA)

Index; Q1'14 = 100
Note: avg. annual growth = 2.2%



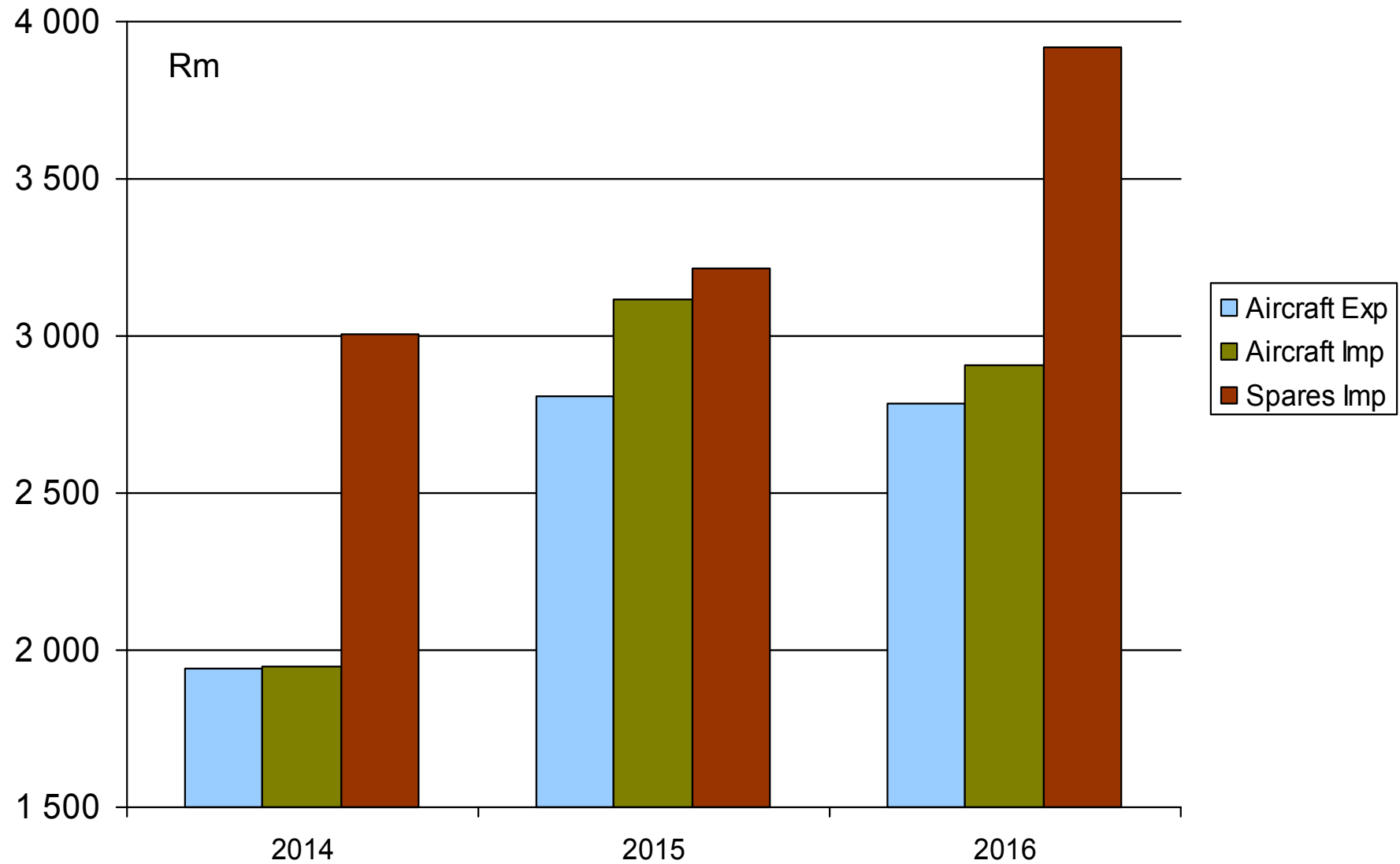
CAAI group indices for value of imports of aircraft & spares

(3-quarter moving average)



Value of spares imports and aircraft imports & exports (under 15t)

(Sources: SARS: own calculations)



% Increase in ATM's 2014 – 2016 top-8 airports (included in the CAAI)

(Sources: Acsa; CAASA; own calculations)

