

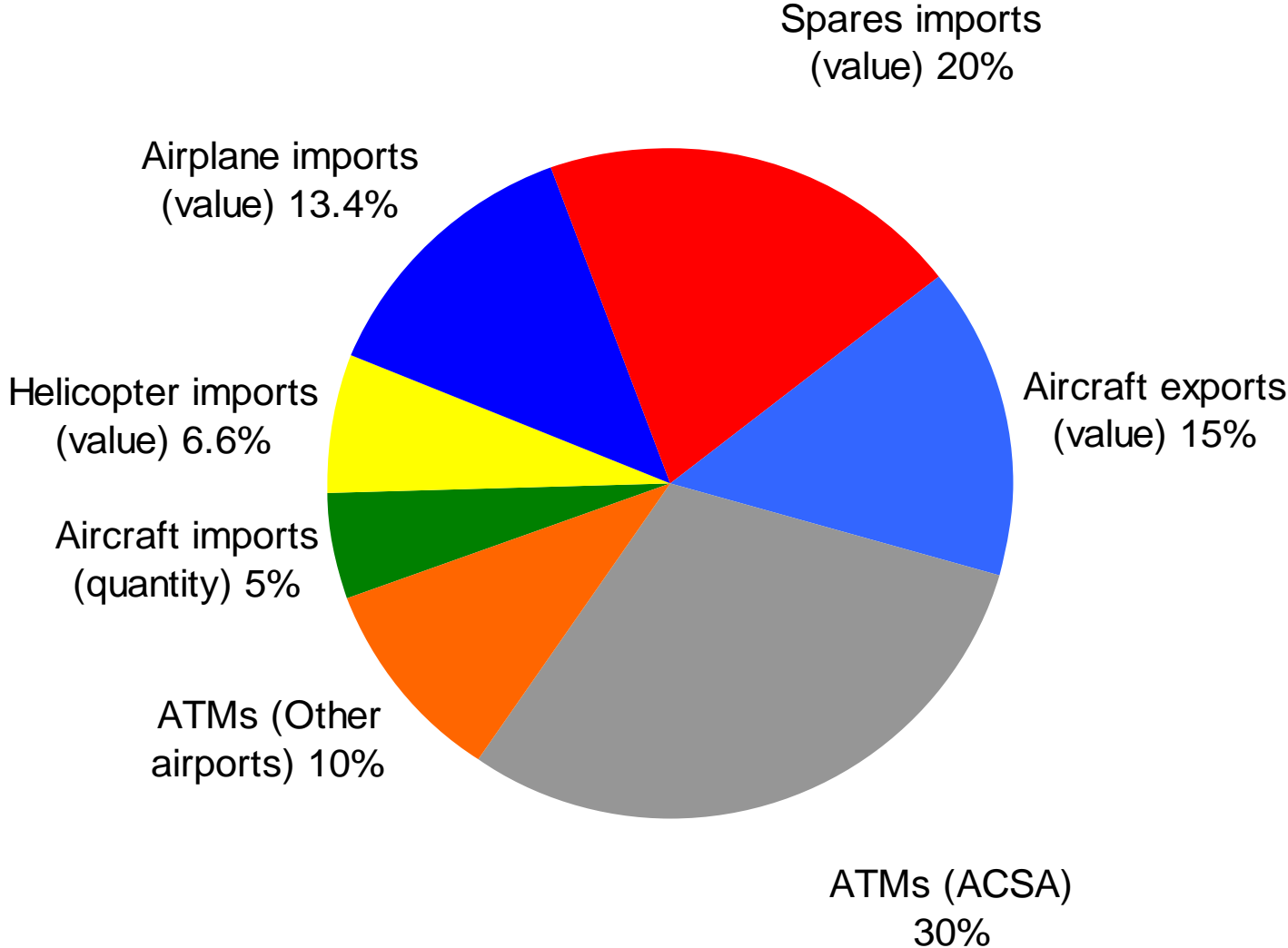


The CAASA  
Aviation Activity Index  
(CAAI)  
4th quarter 2017

# Methodology employed for the design of the Aviation Activity Index (AAI)

- The AAI is based on composite indexation technique, whereby a group of indicators representing different units is forged into a single value
- The different indicators are each assigned a weighting in terms of their perceived contribution to the trend that the index wishes to illustrate, namely the current & historical level of activity in the commercial aviation industry
- Changes over time in the different indicators are measured and then also expressed as changes to the weighted index
- A total of 25 different indicators comprise the AAI, emanating from the following seven groups:
  - (i) Value of imports of helicopters
  - (ii) Value of imports of aeroplanes (of a mass less than 15t)
  - (iii) Physical quantity of imported aircraft
  - (iv) Value of imports of aircraft spares
  - (v) Value of exports of aircraft (of a mass less than 15t)
  - (vi) Air traffic movements at ACSA airports
  - (vii) Air traffic movements at key non-ACSA airports
- Combined in an appropriately weighted index, these indicators provide an objective & balanced measure of economic activity in various spheres of the commercial aviation industry

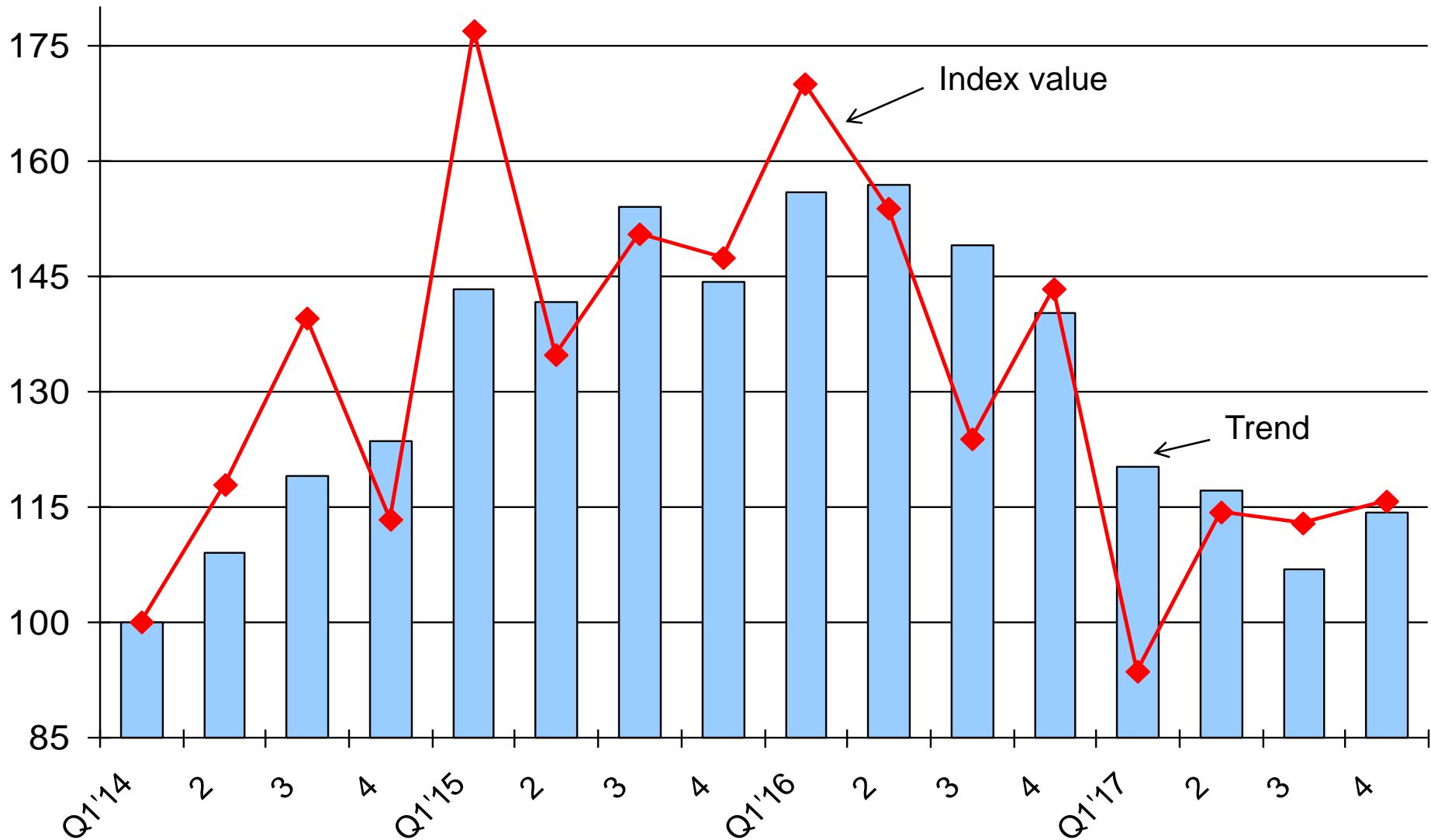
# Composition of the groups of indicators included in the CAAI



# CAASA Aviation Activity Index (CAAI) for South Africa

*(Trend = 3-quarter moving average)*

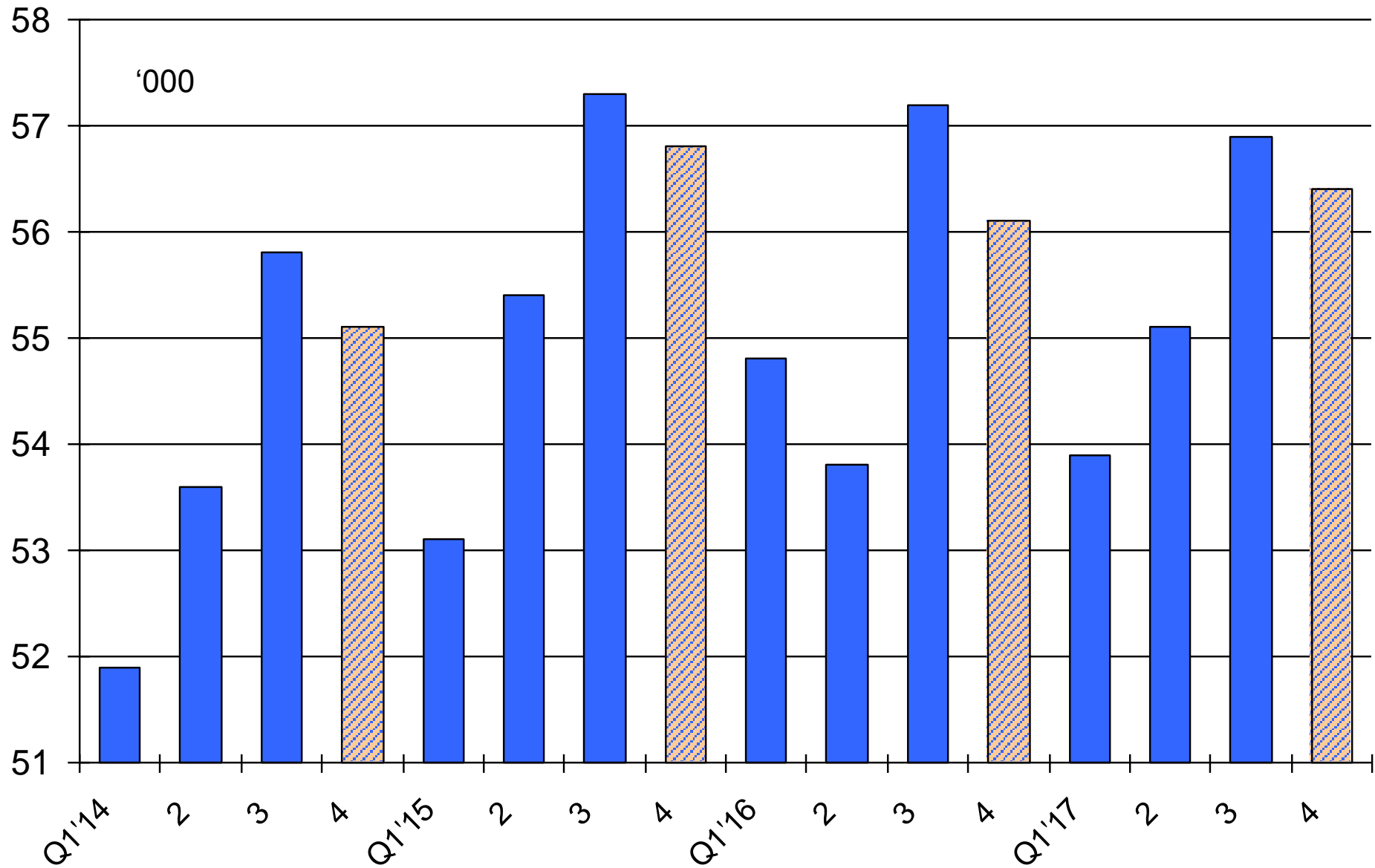
Index; Q1 2014=100



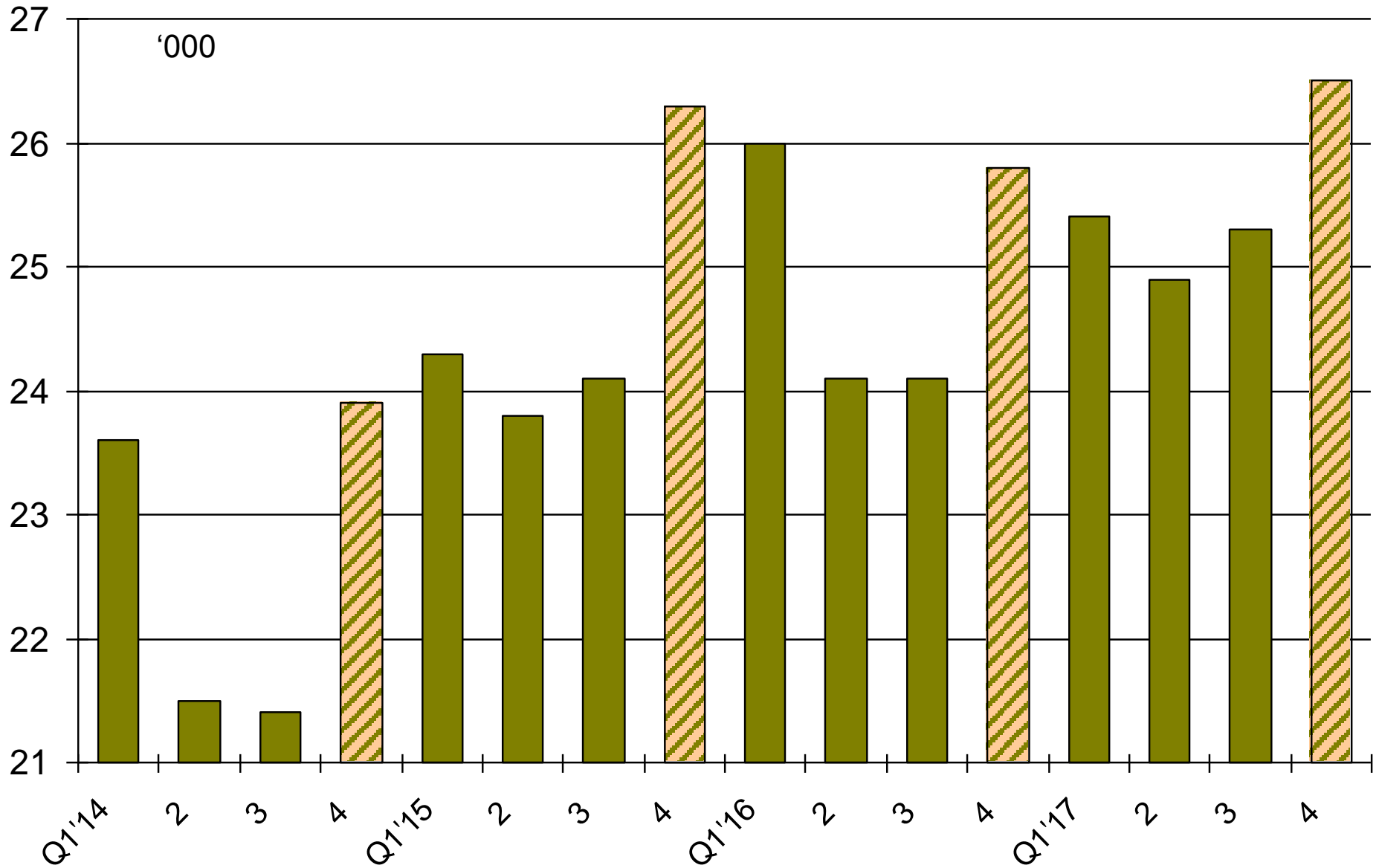
# Some trivia questions

1. Which of the following airports had the most ATMs in Q4 2017:
  - Port Elizabeth or Rand?
  - Lanseria or East London?
  - George or Virginia?
  - Grand Central or Durban?
2. Which of the following had the highest import value in Q4 2017:
  - Propellers or undercarriages?
3. Which of the following had the highest import value in Q4 2017:
  - Helicopters & aeroplanes < 15t or aircraft spares?

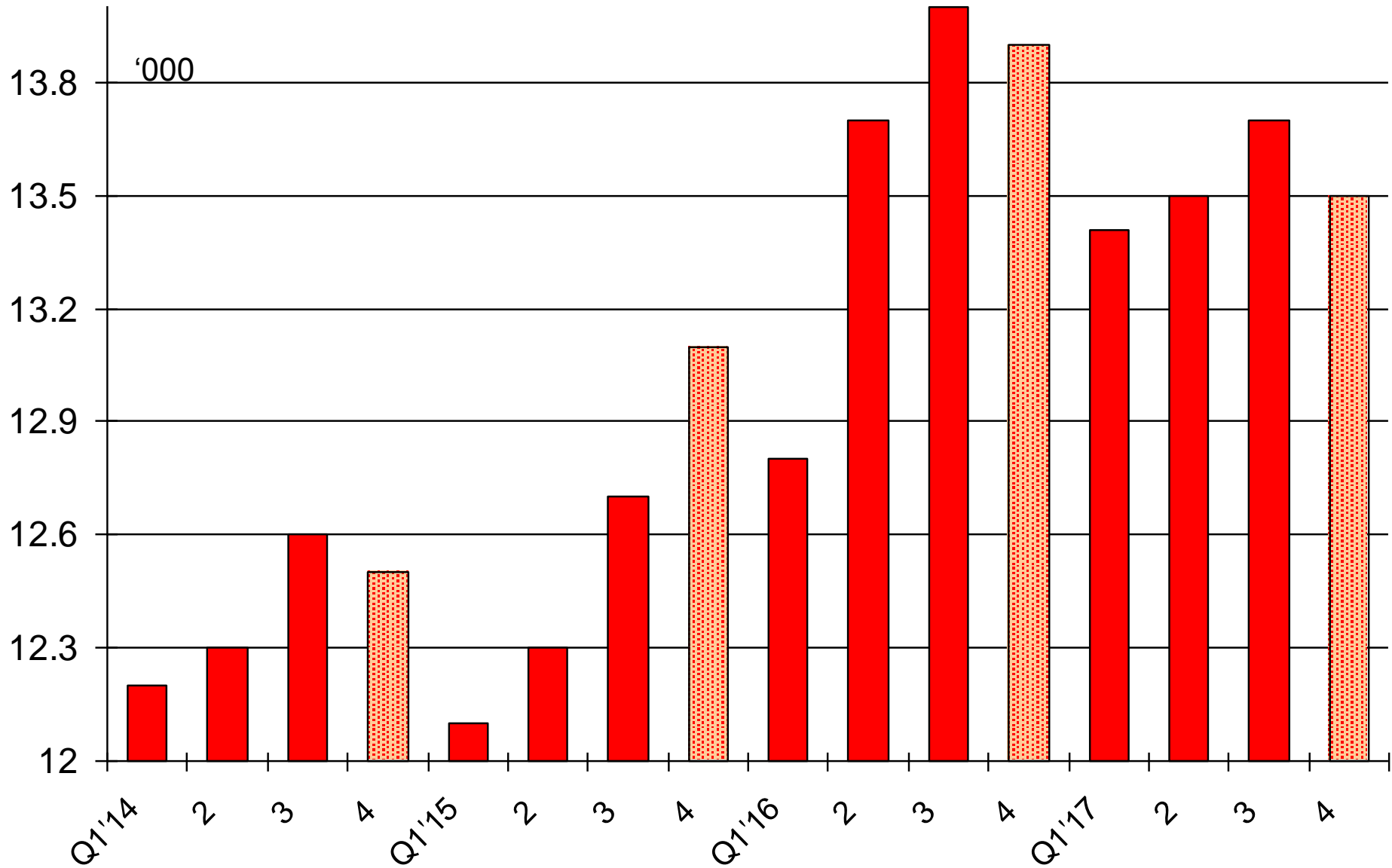
# ATMs at OR Tambo airport



# ATMs at Cape Town airport



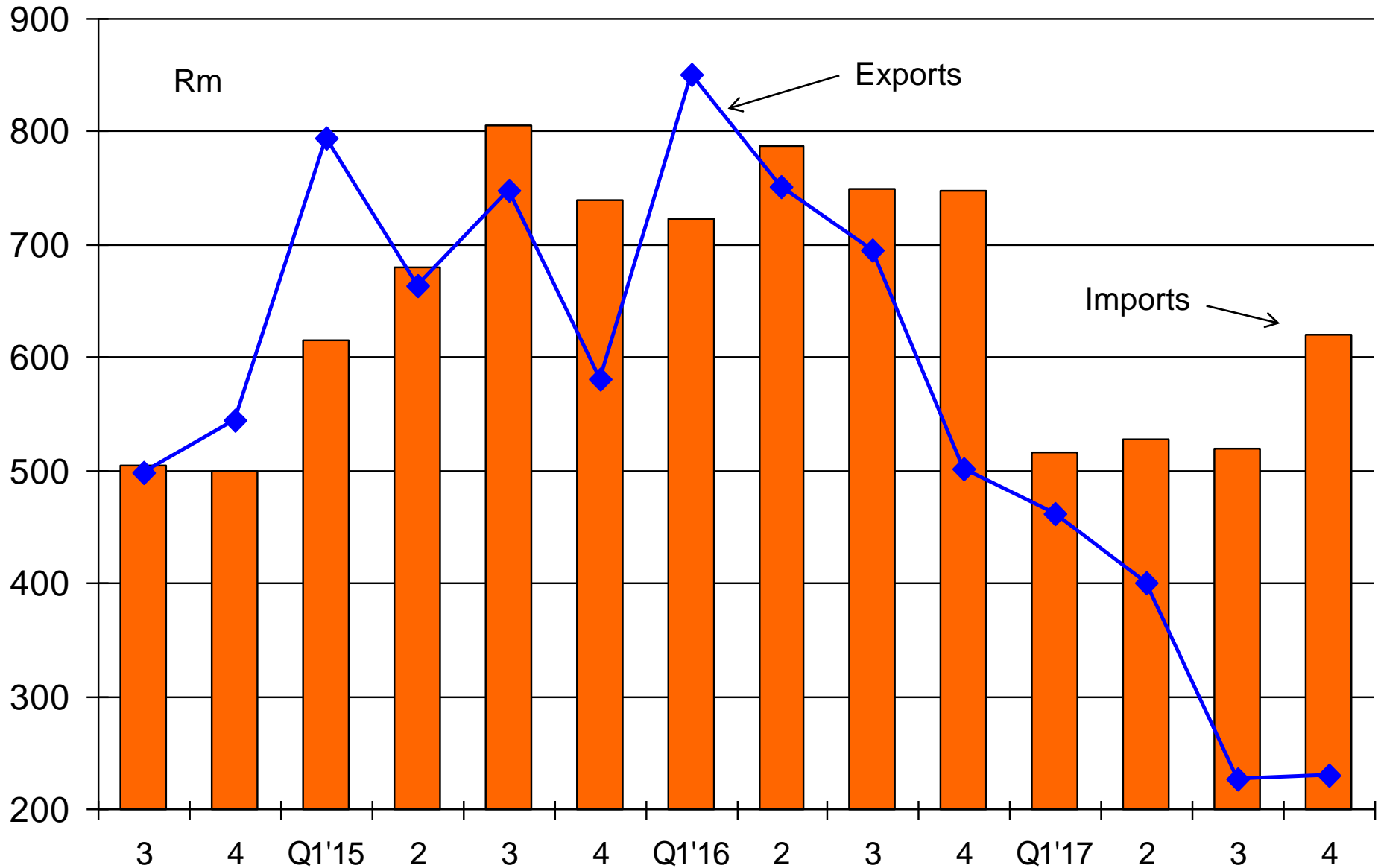
# ATMs at Durban airport



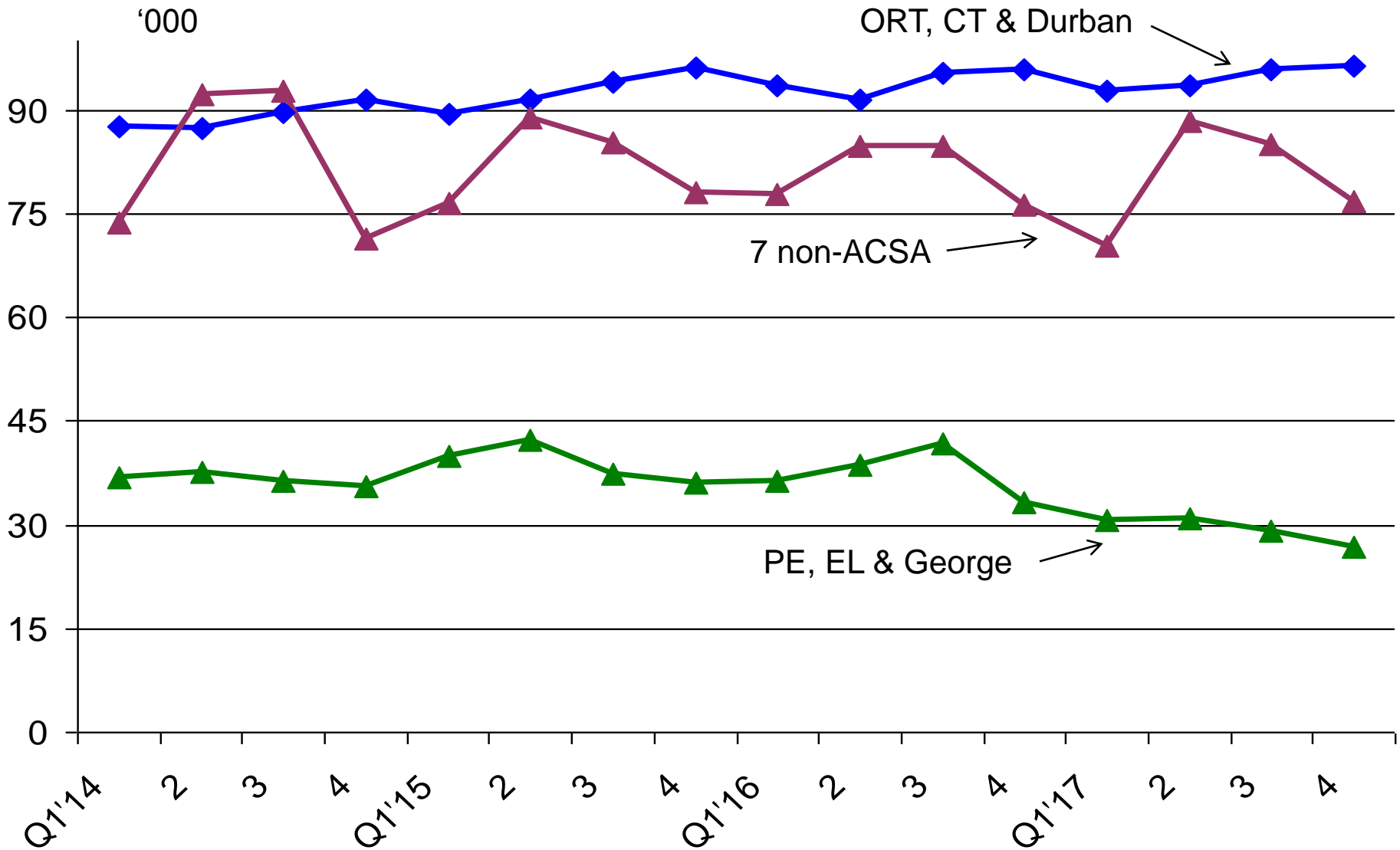


# Import & export value of helicopters and aeroplanes with a mass of less than 15t

(Note: 2-month moving avg.)

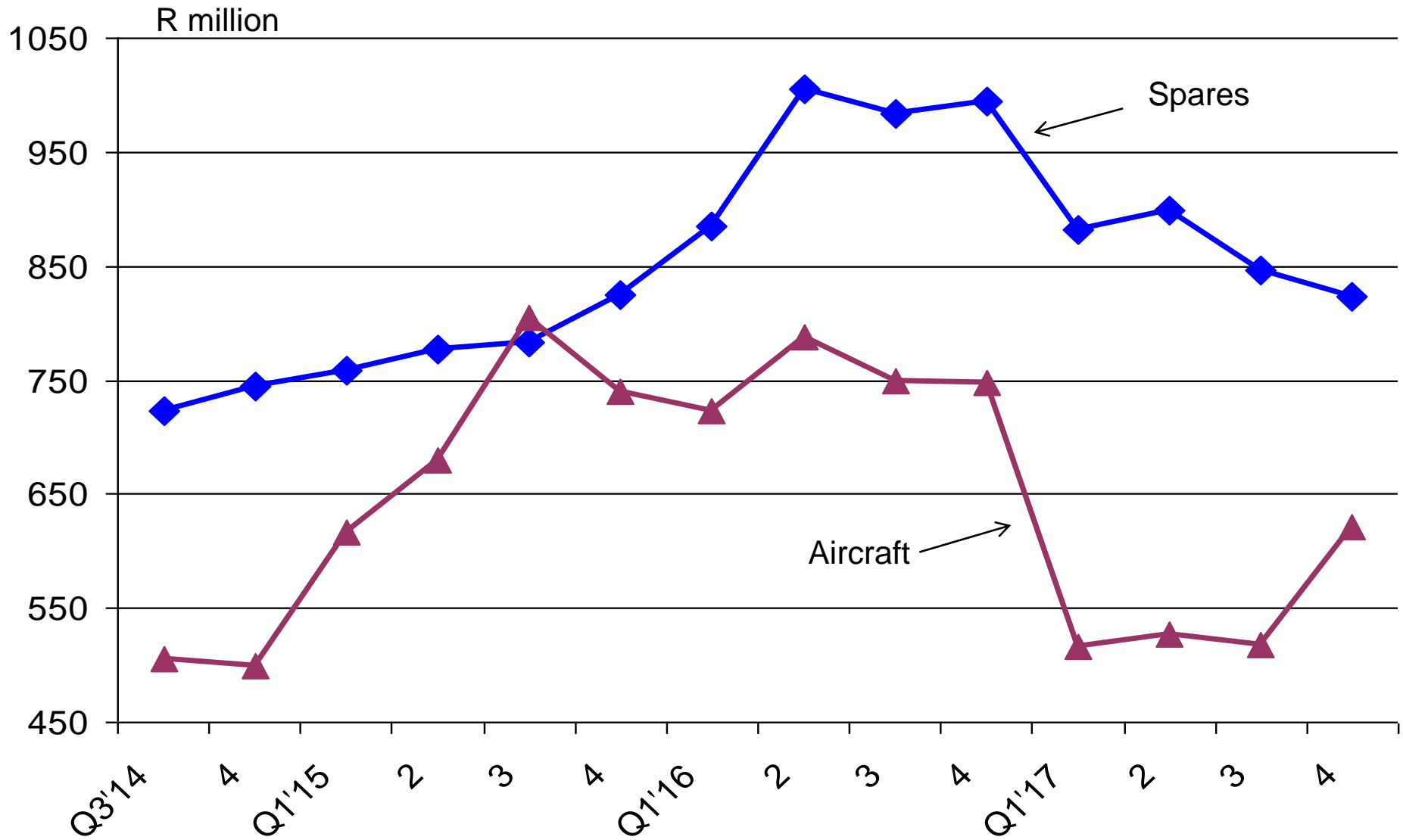


# Total ATMs at three groups of airports



# Value of imports of aircraft & spares

(Note: 3-month moving avg.)



## Best performers in Q4 2017 (compared to 4<sup>th</sup> quarter average since 2014)

	%
Imports of aeroplanes above 2t	29.7
ATMs Grand Central	13
ATMs Pietermaritzburg	5.4
ATMs Cape Town	3.4
ATMs Durban	1.9
ATMs Nelspruit	1.5
ATMs Lanseria	0.6
ATMs OR Tambo	0.5